

### Single Room

**Single Bed with En-suite Bathroom**  
£30 - £45

### Budget Double Room (Single Occupancy)

**Double Bed with En-suite Bathroom**  
£40 - £56

### Budget Double Room (Double Occupancy)

**Double Bed with En-suite Bathroom**  
£49 - £65

### Double Premier Room

**Double Bed with En-suite Bathroom**  
£65 - £75

### Double Superior Room

**Double Bed with En-suite Bathroom**  
£75 - £95

### 2/3 Person Room

**Double and Single Beds with En-suite Bathroom**  
£85 - £105

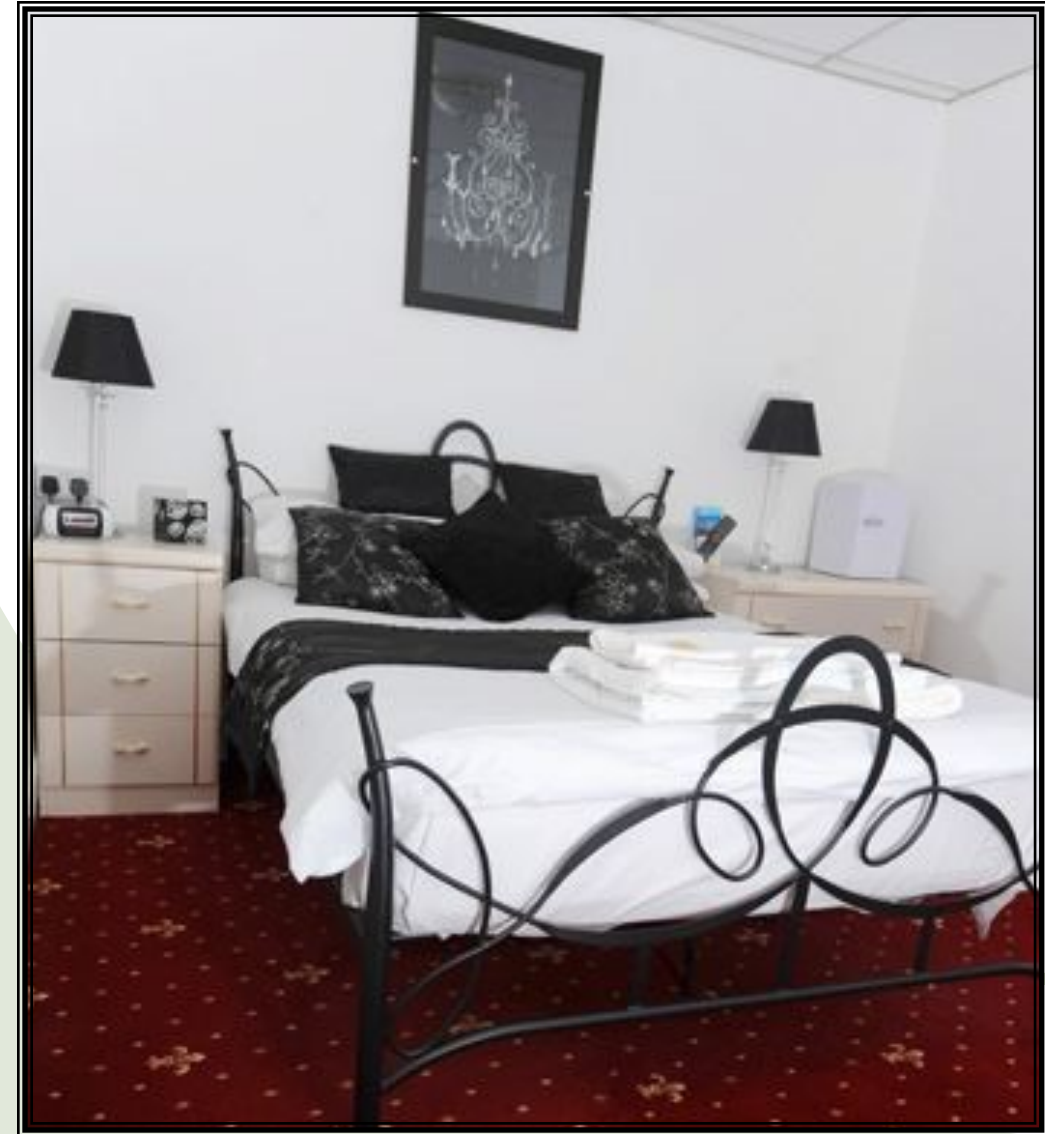
### 3/4 Person Room

**Double & 2 Single beds with En-suite Bathroom**  
£99 - £149

Guide prices are per room per night with maximum occupancy

Rates are per room, per night including breakfast. Advance booking, especially in the summer months and during the Illuminations is advised.

# New Phildene Blackpool



**New Phildene Hotel, 5-7 St Chads Road, Blackpool, Lancashire, FY1 6BP.**

**Tel: 01253 346141 | Fax: 01253 345243**

**W: [www.newphildenehotel.co.uk](http://www.newphildenehotel.co.uk) | E: [info@newphildenehotel.co.uk](mailto:info@newphildenehotel.co.uk)**

©2010 New Phildene Hotel Blackpool

## New Phildene Hotel

### Welcome

The New Phildene has been graded under guest accommodation to a 4 star standard by Visit Britain. We are just 25 metres from Blackpool seafront, opposite St Chad's Headland.



"Clean, tidy and friendly hotel, we stayed 2 nights in a superior double room. It was very light and clean, the bed was very comfy. The hotel was run really good, Lorna and John couldn't do enough for you.."

The New Phildene is perfectly suited for both business and leisure guests as we are just a short walk from the centre of Blackpool and all major attractions.

We have 2 upper ground floor lounges with marvellous sea views for guests to relax in, while taking a drink or coffee served from our very own bar.

We have a sheltered patio area adjacent to the bar and to the front of the hotel. Here you can sit out in the sun whilst enjoying refreshments from the bar.

Enjoy a quiet pre-dinner drink or let us take care of that special celebration.



## About Us

The bar and lower ground floor area are open to guests as well as their visitors. We serve a wide range of drinks and currently have on Draft Carling & Grolsch Lager and Worthington Bitter. We also serve Guinness from a surge unit (As good as draft).

The bar also serves tea, coffee, hot chocolate and a selection of bar snacks and meals. We have a good selection of non-alcoholic wines, beers and soft drinks.

Breakfast is taken in the dining room between 09:00 – 10:00 am, The extensive breakfast menu is freshly prepared for you. Where possible we use local and free range products supporting local trade.

We cater for a wide choice of our guest's tastes and food requirements from our full English breakfast, to those of you that require a lighter Menu.

Special dietary requirements are catered for

## Our Rooms

All rooms have been uniquely decorated and the atmosphere is friendly and relaxed.

Our rooms are light bright and airy and are ideal for individuals on holiday or a short break and business

travelers alike. Our beds have crisp clean bedding with tasteful accessories of throws and cushions. Soft white fluffy bath sheets and hand towels are provided for you and are changed daily if required. Rooms are serviced every day to the highest standards and levels of cleanliness.

Complimentary toiletries, bottled water, a selection of beverages and biscuits are supplied. Rooms have televisions with free view channels, radio alarm clock and Tea and Coffee making facilities, Hair dryers, Fans, Iron & Ironing Board are available from reception on request. Wireless internet is available free to all guests.

Please be advised for the comfort and convenience of the majority of our guests we do not cater for children under the age of 7 years.

